

ESTUDIO DE IMPACTO AMBIENTAL APROVECHAMIENTOS HIDROELÉCTRICOS DEL RÍO SANTA CRUZ (PRESIDENTE DR. NÉSTOR C. KIRCHNER Y GOBERNADOR JORGE CEPERNIC), PROVINCIA DE SANTA CRUZ

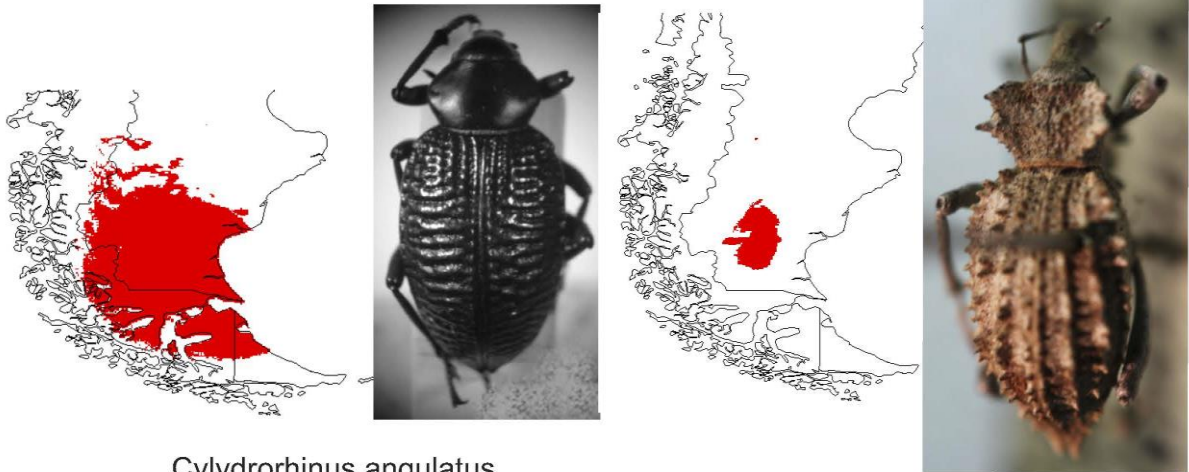
ACTUALIZACIÓN

CAPÍTULO 3 – LÍNEA DE BASE AMBIENTAL Y ESTUDIOS ESPECIALES

PUNTO 15 – ESTUDIO DE MACROINVERTEBRADOS

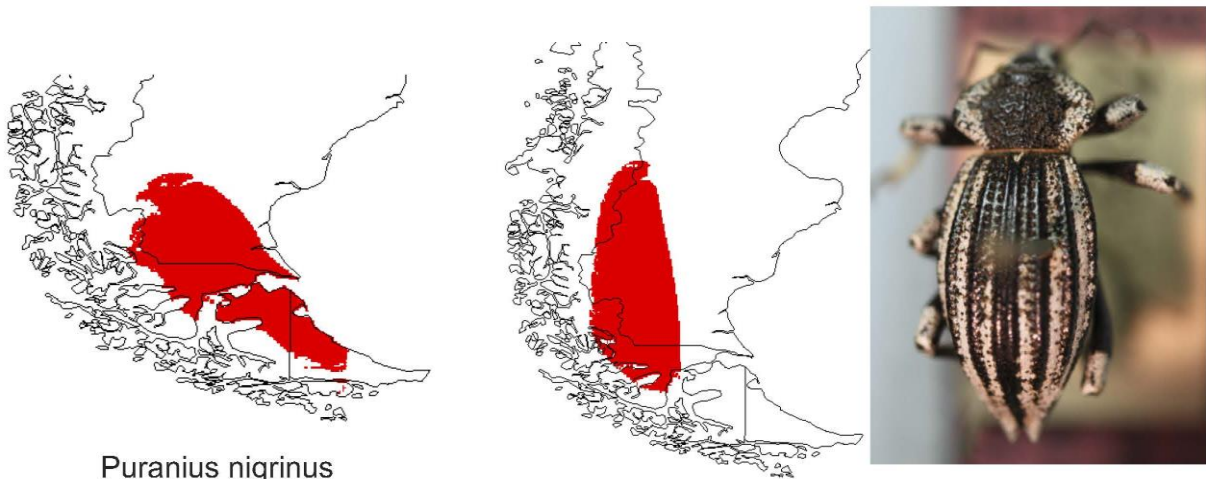
ANEXO II – MAPAS

Restringidos al sur de América del Sur



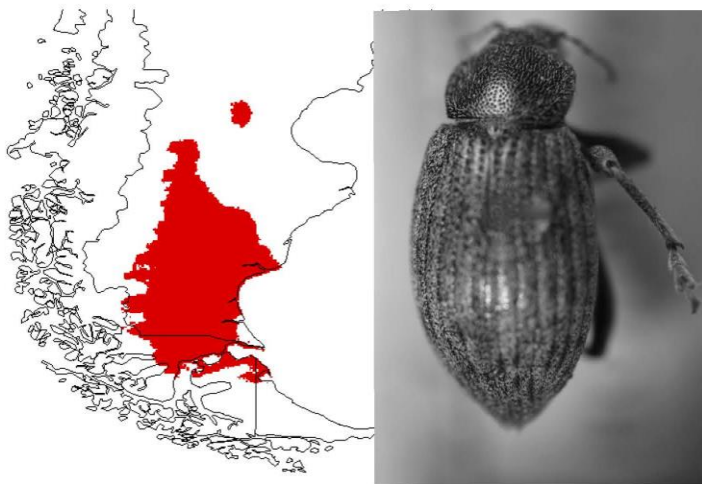
Cyldrorhinus angulatus

Cyldrorhinus horridus



Puranius nigrinus

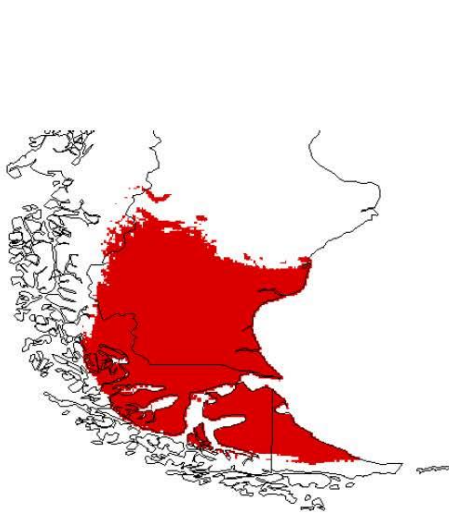
Cyldrorhinus melanoleucus



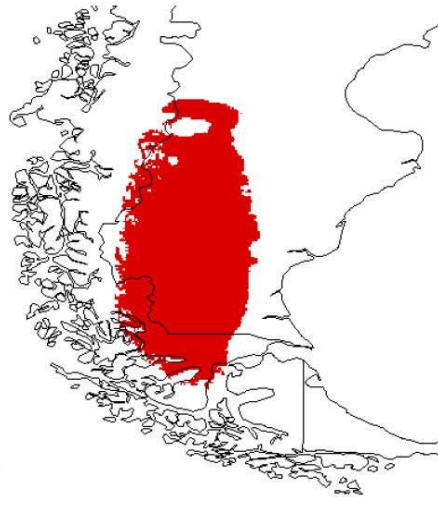
Cyldrorhinus marinus

Lámina 1

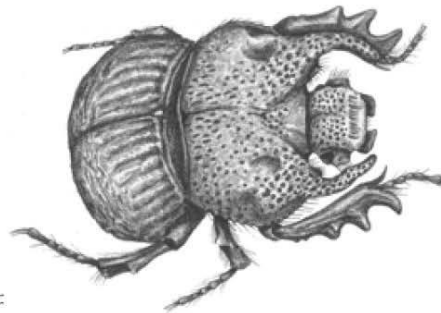
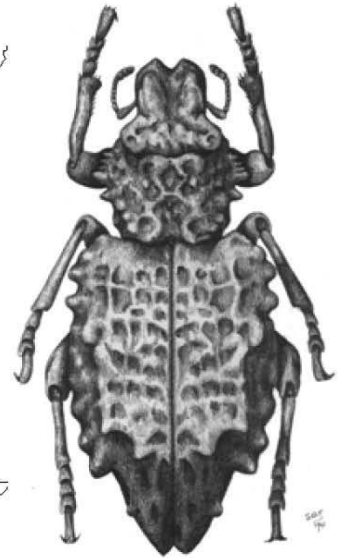
Restringidos al sur de América del Sur



Baripus clivinoides



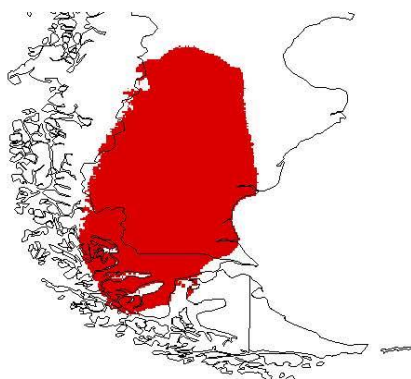
Sysciophthalmus bruchi



Taurocerastes patagonicus



Nyctelia sallei



Emmalodera atronitens



Platesthes burmeisteri

Lámina 2

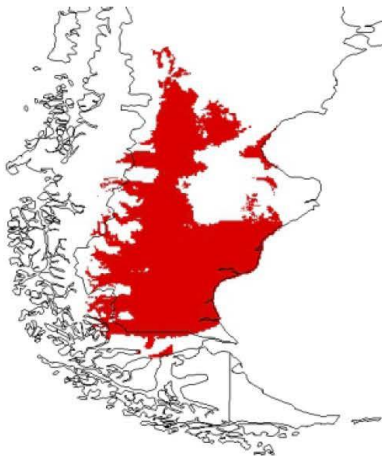
Restringidos al sur de América del Sur



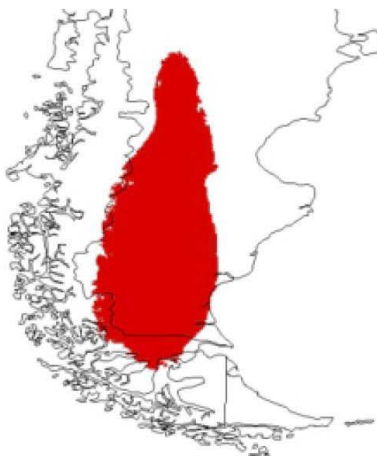
Platesthes granulipennis



Praocis bicarinata



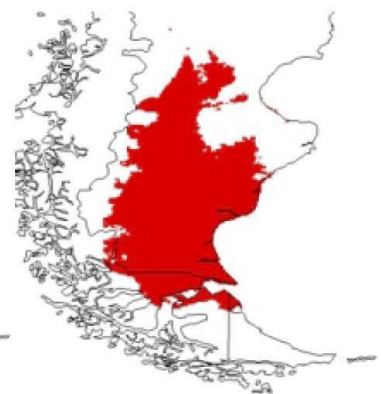
Nyctelia solieri



Patagonopraocis minor



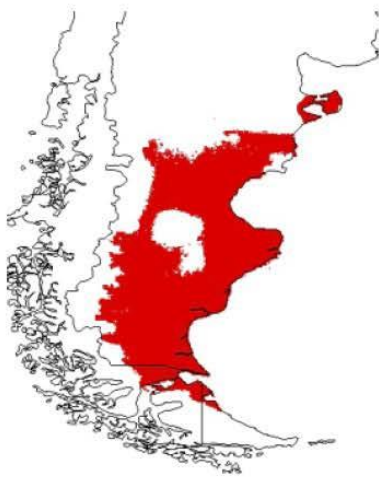
Peltolobus patagonicus



Emmalodera nitens

Lámina 3

Distribuidos en la estepa central



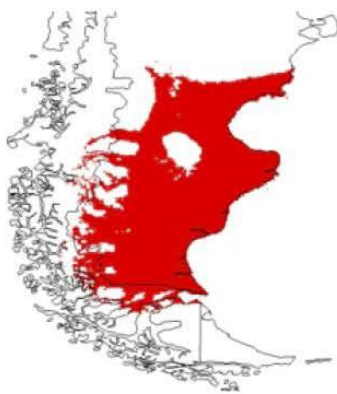
Cnemalobus curtisi



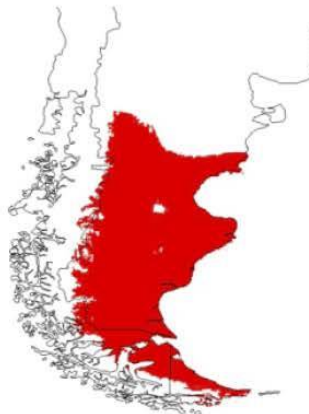
Mimodromius phaeoxanthus



Baripus longitarsis



Epipedonota lata



Emmalodera obesa obesa



Nyctelia darwini

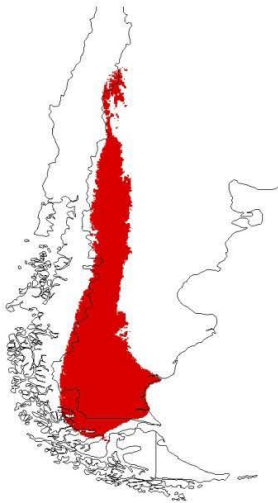


Mitragenius araneiformis

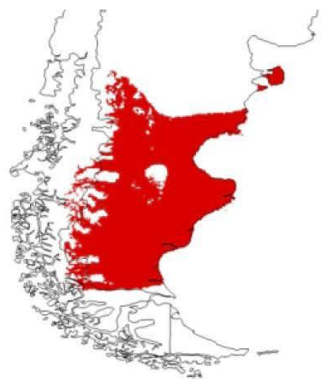


Lámina 4

Distribuidos en la estepa central

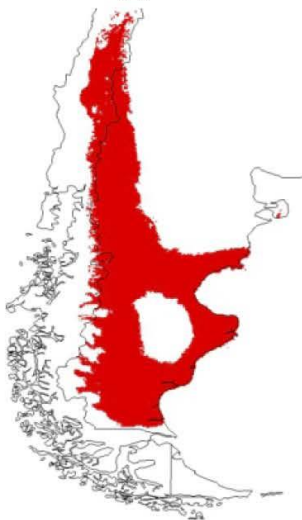


Scotobius akidiodes akidiodes

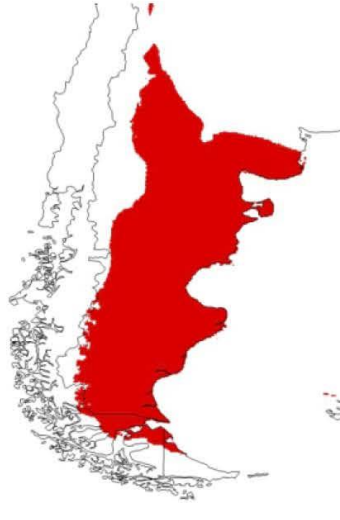


Nyctelia stephensi

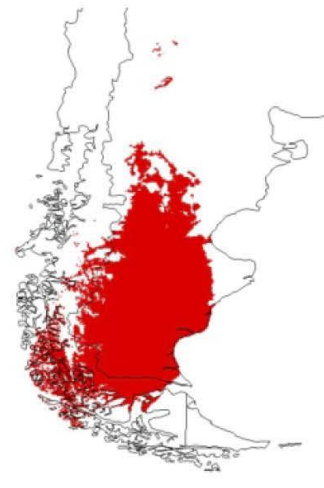
Cyldrorhinus denudatus



Nyctopetus argentinus



Psectracelis sulcicollis



Praocis striollicolis

Lámina 5

ampliamente distribuidos



Antarctiola laevis



Bembidion solieri



Carboniella platensis



Metius blandus

Lámina 6

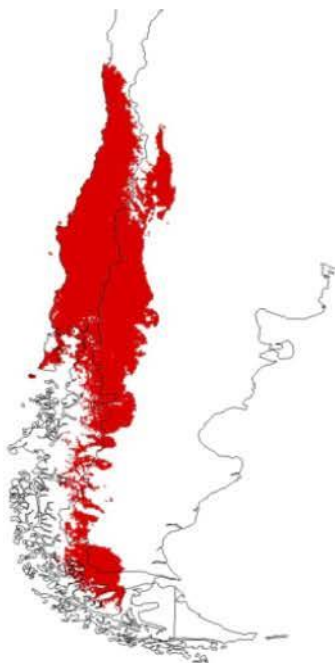
Ampliamente distribuidos



Metius malachitichus



Pachymorphus chalceus



*Tetragonoderus viridis**

Lámina 7